

PC ETHERNET/NETWORK JACKS (RJ45 8P8C)



ELECTRICAL CHARACTERISTICS:

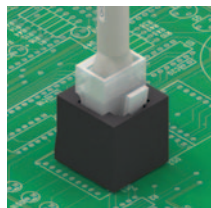
- Operating Voltage:** 125 VAC max.
- Current Rating:** 1.5 Amp max.
- Contact Resistance:** 40m Ω max.
- Insulation Resistance:** 1,000 M Ω min
- Dielectric Withstanding Voltage:** 1,000 VAC for 1 minute

MECHANICAL CHARACTERISTICS:

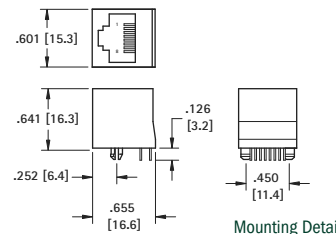
- Durability:** 500 Cycles
- Operating Temperature:** -40°F to 185°F (-20°C to 75°C)
- Packaging:** Anti-ESD plastic trays

APPLICATIONS:

- Network Equipment
- Modem
- Hub
- Switch
- Router
- Gateway
- Repeater
- Bridge
- PC motherboard
- Laptops & Notebooks



VERTICAL ENTRY

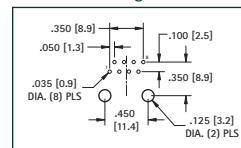


- Allows connector to board perpendicular to PC board

SOCKET SPECIFICATIONS:

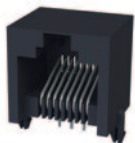
- Body:** PBT UL 94V-0- Black
- Contacts:** Phosphor Bronze, Gold Plate (Flash)
- Solder Tails:** Phosphor Bronze, Tin Plate

CAT. NO. 949

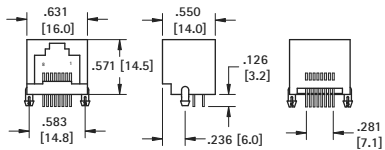


HORIZONTAL ENTRY

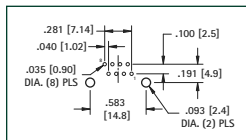
THM-COMPACT



- Small PC footprint ideal for high density applications



Mounting Detail

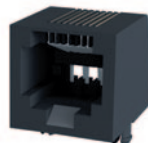


SOCKET SPECIFICATIONS

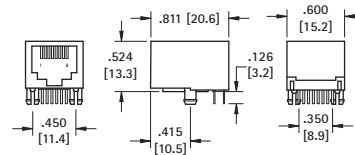
- Body:** PBT UL 94V-0- Black
- Contacts:** Phosphor Bronze, Gold Plate (Flash)
- Solder Tails:** Phosphor Bronze, Tin Plate

CAT. NO. 942

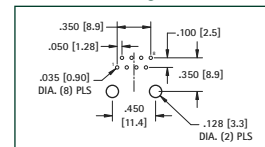
THM-EXTENDED



- Extra long connector extends past PC board for access to port thru case



Mounting Detail

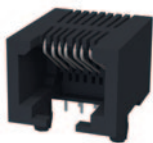


SOCKET SPECIFICATIONS

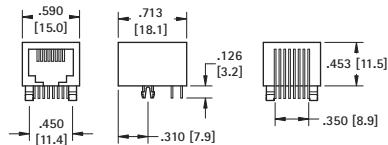
- Body:** PBT UL 94V-0- Black
- Contacts:** Phosphor Bronze, Gold Plate (Flash)
- Solder Tails:** Phosphor Bronze, Tin Plate

CAT. NO. 948

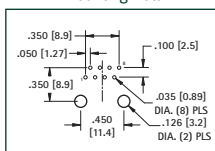
THM-LOW PROFILE



- Low Height ideal for compact designs



Mounting Detail

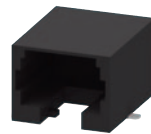


SOCKET SPECIFICATIONS:

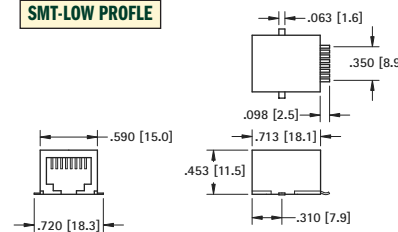
- Body:** PBT UL 94V-0- Black
- Contacts:** Phosphor Bronze, Gold Plate (Flash)
- Solder Tails:** Phosphor Bronze, Tin Plate

CAT. NO. 943

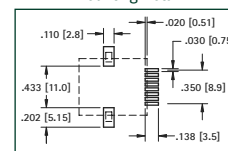
SMT-LOW PROFILE



- Low Height ideal for compact designs



Mounting Detail



SOCKET SPECIFICATIONS:

- Body:** PBT UL 94V-0- Black
- Contacts:** Phosphor Bronze, Gold Plate (Flash)
- Solder Tails:** Phosphor Bronze, Nickel Plate

CAT. NO. 944

KEYSTONE JACKS (RJ45 8P8C)



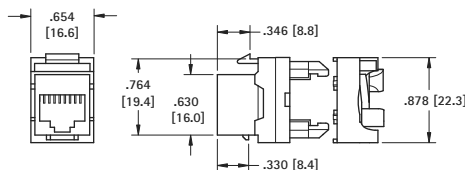
Front



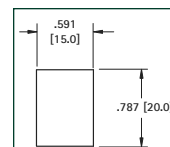
Back

- Color Coded for easy assembly
- Toolless punch down design

- Strip approximately 1.5" of the cable jacket.
- Attach wires to cover following the color coding markings.*
- Align cover to module. Be sure to align polarity tab.
- Twist locking mechanism to punch down the wires and lock the cover onto the module.
- Trim extra wire from housing. Ready to be installed into panel



Panel Cutout



SOCKET SPECIFICATIONS:

- Body:** PC UL 94V-0
- Contacts:** Phosphor Bronze, Gold Plate (Flash)
- IDC Contacts:** Phosphor Bronze, Nickel Plate
- Accepts #24-26 AWG wire

CAT. NO. 946

*Color coding for both T568A/T568B wiring schemes. Both ends of cable should match unless creating a crossover cable.