



Passive Components > Resistors > Through-Hole Resistors



Resistor Type: **Precision Resistor**

Element Type: **Thin Film**

Power Rating: **.25 W**

Resistance Class: **1k $\Omega$  - 1M $\Omega$**

Resistance Value: **7.5K  $\Omega$**

Features

Product Type Features

Resistor Type	Precision Resistor
Element Type	Thin Film

Configuration Features

Number of Resistors	1
---------------------	---

Electrical Characteristics

Operating Voltage	350 V
Power Rating	.25 W
Resistance Class	1k $\Omega$ - 1M $\Omega$
Resistance Value	7.5K $\Omega$
Passive Component Tolerance	1 %

Body Features

Lead Type	Axial-Leaded
-----------	--------------

Termination Features

Termination Area Base Material	Copper
Number of Terminations	2

Dimensions

Passive Component Dimensions	7.2 x 2.5 mm
------------------------------	--------------



Usage Conditions

Operating Temperature Range	-55 - 155 $^{\circ}\text{C}$
Temperature Coefficient	$\pm 15$ ppm/ $^{\circ}\text{C}$

Packaging Features

Packaging Method	Bandoliered
------------------	-------------

Product Compliance

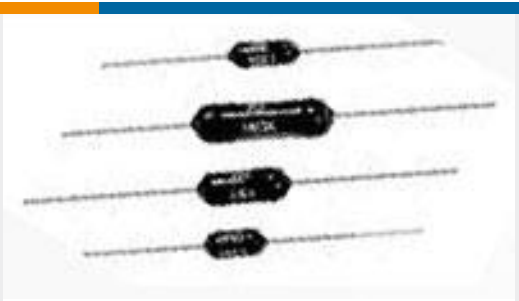
For compliance documentation, visit the product page on [TE.com](#)>

EU RoHS Directive 2011/65/EU	Compliant
EU ELV Directive 2000/53/EC	Compliant
China RoHS 2 Directive MIIT Order No 32, 2016	No Restricted Materials Above Threshold
EU REACH Regulation (EC) No. 1907/2006	Current ECHA Candidate List: JAN 2024 (240) Candidate List Declared Against: JUN 2016 (169) SVHC > Threshold: Not Yet Reviewed
Halogen Content	Not Yet Reviewed for halogen content
Solder Process Capability	Wave solder capable to 265 $^{\circ}\text{C}$

Product Compliance Disclaimer

This information is provided based on reasonable inquiry of our suppliers and represents our current actual knowledge based on the information they provided. This information is subject to change. The part numbers that TE has identified as EU RoHS compliant have a maximum concentration of 0.1% by weight in homogenous materials for lead, hexavalent chromium, mercury, PBB, PBDE, DBP, BBP, DEHP, DIBP, and 0.01% for cadmium, or qualify for an exemption to these limits as defined in the Annexes of Directive 2011/65/EU (RoHS2). Finished electrical and electronic equipment products will be CE marked as required by Directive 2011/65/EU. Components may not be CE marked. Additionally, the part numbers that TE has identified as EU ELV compliant have a maximum concentration of 0.1% by weight in homogenous materials for lead, hexavalent chromium, and mercury, and 0.01% for cadmium, or qualify for an exemption to these limits as defined in the Annexes of Directive 2000/53/EC (ELV). Regarding the REACH Regulations, TE's information on SVHC in articles for this part number is still based on the European Chemical Agency (ECHA) 'Guidance on requirements for substances in articles'(Version: 2, April 2011), applying the 0.1% weight on weight concentration threshold at the finished product level. TE is aware of the European Court of Justice ruling of September 10th, 2015 also known as O5A (Once An Article Always An Article) stating that, in case of 'complex object', the threshold for a SVHC must be applied to both the product as a whole and simultaneously to each of the articles forming part of its composition. TE has evaluated this ruling based on the new ECHA "Guidance on requirements for substances in articles" (June 2017, version 4.0) and will be updating its statements accordingly.

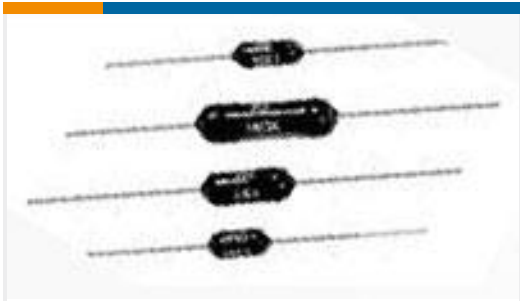
Compatible Parts



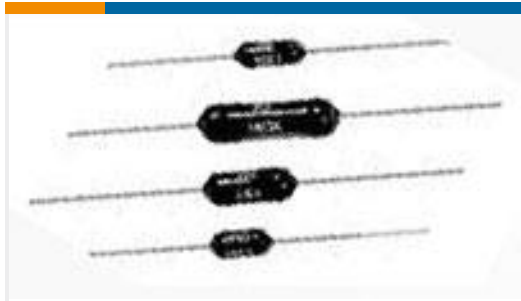
TE Part # 9-1879664-1  
H8 10K 0.1% 15PPM



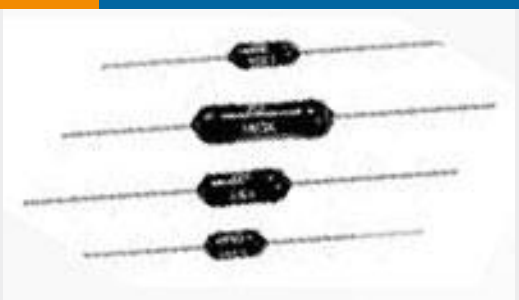
TE Part # 1879623-8  
H4 1K3 0.1% 5PPM



TE Part # 2-1879622-2  
H4P 1M0 1% 50PPM



TE Part # 5-1879642-1  
H8 5K0 0.1% 25PPM



TE Part # 1879629-8  
H4P 127R 0.5% 5PPM

Also in the Series | [Holsworthy Holco](#)



[Through-Hole Resistors\(6406\)](#)

Customers Also Bought



TE Part # 2-2329328-0  
PB OFF/ON HC BLU M4 TERM. IP68



TE Part # 2329359-9  
PB ON/OFF HC GRE M1 TERM IP68 500MM LHS



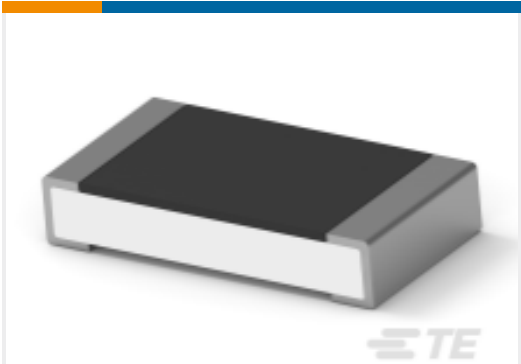
TE Part # 1-1625893-3  
5W SM M/OX 2% 22R



TE Part # 9-2176415-0  
8W STD M/OX 5% 150K



TE Part # 9-2176415-1  
8W STD M/OX 5% 160K



TE Part # 1-2176391-0  
RQ 1206 15K4 0.1% 10PPM 5K RL



TE Part # 3954384002  
CGPE-105-1/2-0-SP



TE Part # 20014203-12  
PRESS XDCR M325M-000005-250PG



Documents

CAD Files

3D PDF

3D

Customer View Model

ENG\_CVM\_CVM\_7-1879617-0\_BA.2d\_dxf.zip

English

Customer View Model

ENG\_CVM\_CVM\_7-1879617-0\_BA.3d\_igs.zip

English

Customer View Model

ENG\_CVM\_CVM\_7-1879617-0\_BA.3d\_stp.zip

English

By downloading the CAD file I accept and agree to the [Terms and Conditions](#) of use.

Datasheets & Catalog Pages

1309350\_PASSIVE\_COMPONENT

English

Axial Leaded Precision Resistors - Type HOLCO Series

English

8-1773459-4\_POWER\_FILTERING\_AND\_RESISTIVE\_SOLUTIONS\_FOR\_ELEVATORS\_AND\_ESCALATORS

English