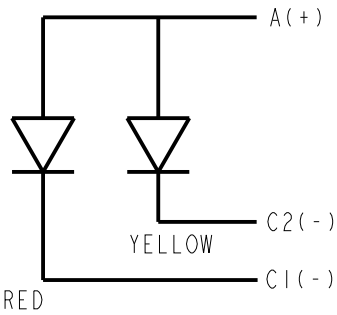
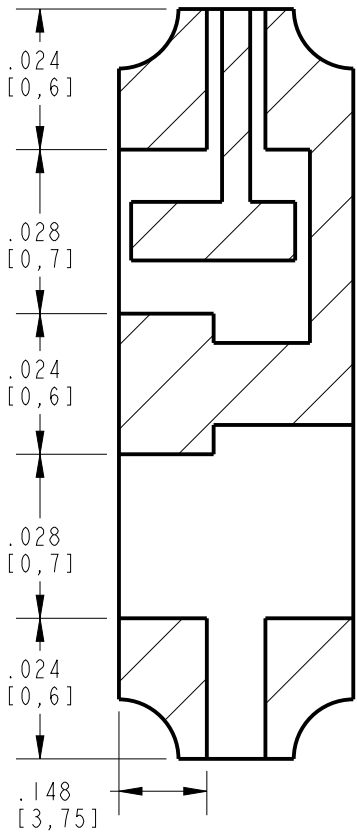
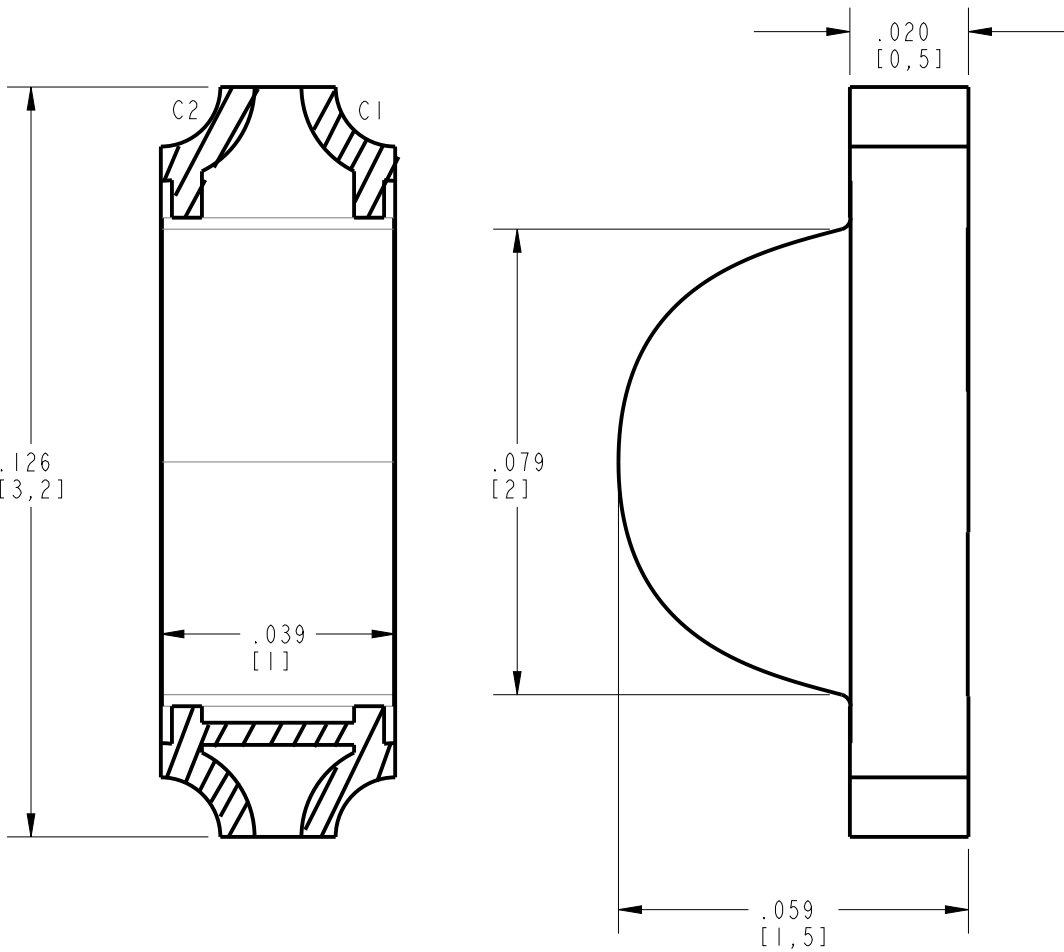


OPERATING CHARACTERISTICS AT 25°C AMBIENT												
DIALIGHT PART NUMBER	COLOR	LUMINOUS INTENSITY (mcd) @I _F = 20 mA			FORWARD VOLTAGE (V) @I _F = 20 mA			REVERSE CURRENT (μA) @V _R = 5 V	PEAK WAVELENGTH	DOMINANT WAVELENGTH		VIEWING ANGLE (DEG)
		MIN	TYP	MAX	MIN	TYP	MAX	MAX	(TYP)	MIN	MAX	TYP
597-2732-607F, -602F	RED	71	—	112	1.6	—	2.4	10	693	624	638	130
	YELLOW	45	—	180	1.6	—	2.4		593	587	594.5	

ABSOLUTE MAXIMUM RATING AT 25 C AMBIENT	BI-COLOR YELLOW/RED	UNITS
POWER DISIPATION	62.5	mW
PEAK FORWARD CURRENT	60	mA
FORWARD CURRENT	25	mA
REVERCE VOLTAGE	5	V
LEAD SOLDERING TEMP FOR 10 SEC	260	C
OPERATING TEMP	-30 TO +85	C
STORAGE TEMP	-40 TO +85	C



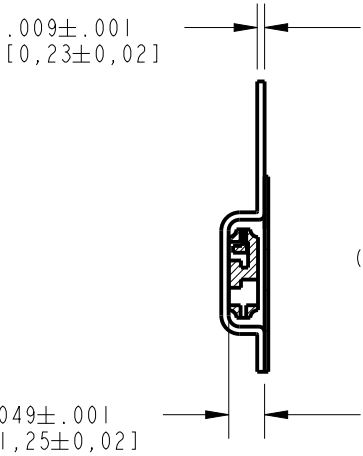
LED SCHEMATIC



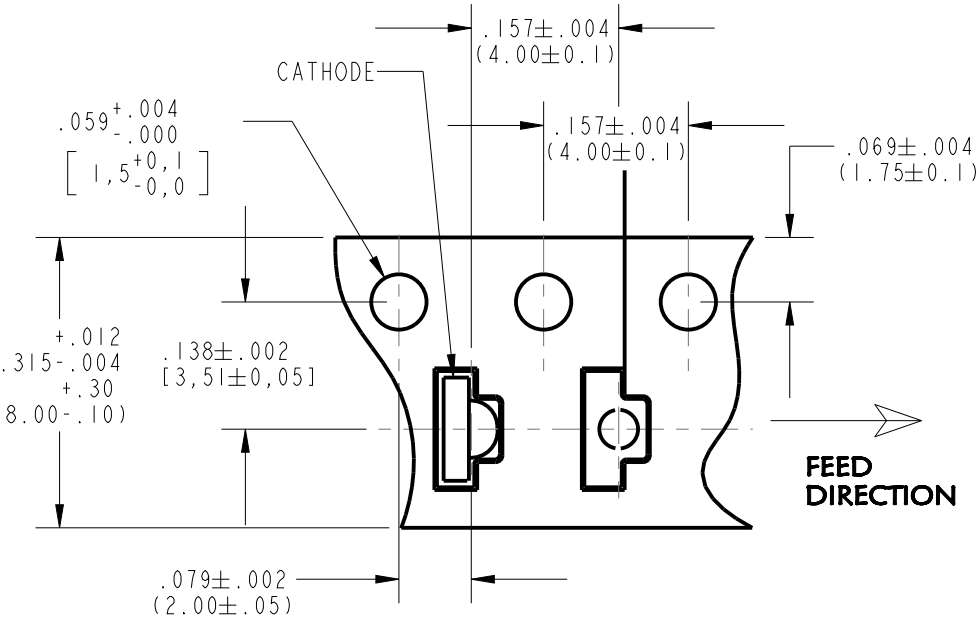
ATTENTION:
OBSERVE PRECAUTIONS FOR
HANDLING ELECTROSTATIC
SENSITIVE DEVICES

NOTES:

1. LENS: YELLOW/RED
2. LED CHIP: ALLnGaP
3. LEADS ARE GOLD (Au) PLATED FINISH.
4. PACKAGING: -607F SUFFIX MEANS 20 PCS SAMPLE STRIP
-602F SUFFIX MEANS 3000 PARTS/REEL, 7 INCH (180mm) DIA. REEL.
5. THIS ASSEMBLY CONTAINS ELECTROSTATIC DISCHARGE SENSITIVE DEVICES (ESDS). MAINTAIN ALL PRECAUTIONARY MEASURES DURING ASSEMBLY, HANDLING, AND STORAGE IN ACCORDANCE WITH IPC-A-610.
6. MOISTURE SENSITIVITY LEVEL 3.
7. TAPE AND REEL LEDS MAY REQUIRE RE-TAPING AFTER TWELVE MONTHS.
8. PIN NUMBERS FOR REFERENCE ONLY, DESIGNATION NON-EXISTENT ON PART.



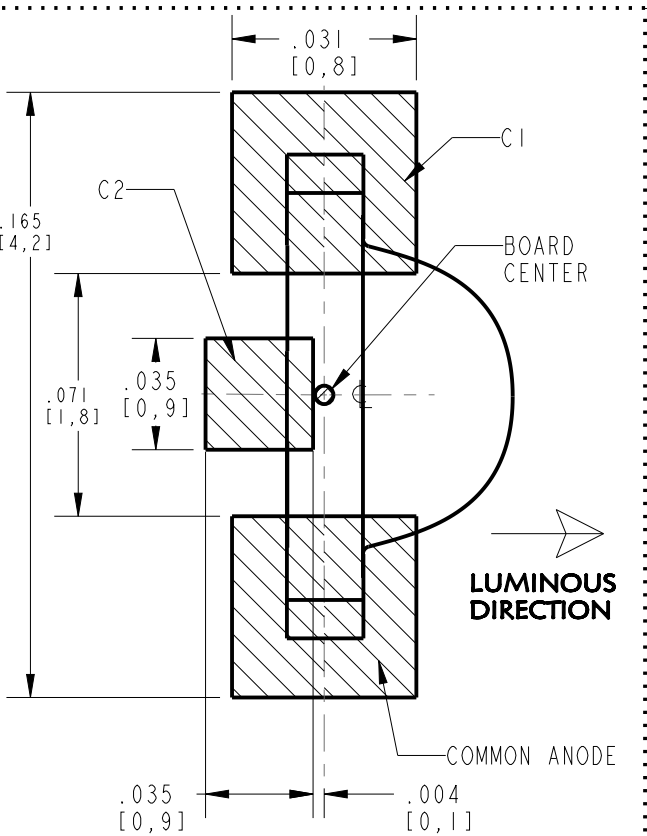
REV	ECN NO	REVISIONS	DRN	CKD	APP	DATE
A	—	NEW RELEASE	VP	JTD	NO	4-12-16



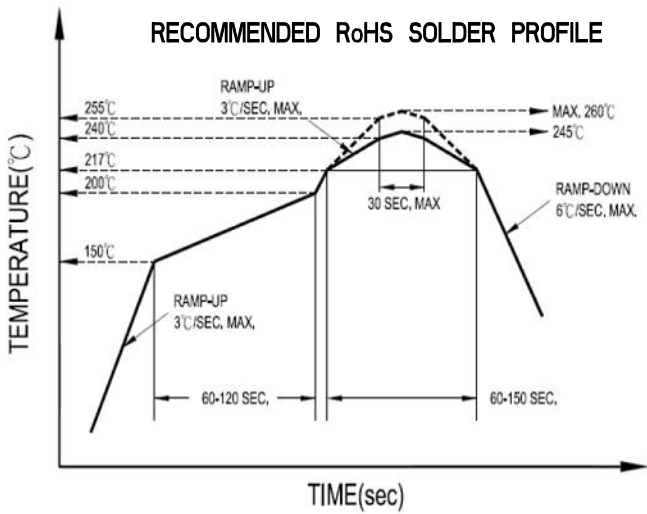
PACKAGE DIMENSIONS OF TAPE AND REEL
(NO SCALE)


RoHS COMPLIANT 597-2713-60XF

Part Numbers with the "F" suffix ending are RoHS Compliant.
For example: 597-2713-60XF
Packaging is marked with "RoHS Compliant" label or equivalent markings. These parts can be used with RoHS reflow profile.
Parts can be wave soldered, dip soldered or hand soldered using typical lead-free soldering process with max 260°C temp. for 5 sec.



RECOMMENDED SOLDERING PAD



THIS DRAWING AND THE CONTENTS HEREIN ARE CONFIDENTIAL AND THE SOLE PROPERTY OF DIALIGHT. REPRODUCTION OF THIS DRAWING OR CONSTRUCTION OF ANY PARTS WITHIN THIS DRAWING ARE FORBIDDEN WITHOUT THE WRITTEN CONSENT OF DIALIGHT.					
SCALE: 31.000		DRAWING NUMBER C-18250			REV A
ALL DIM'S IN: INCHES (MM)					
TOLERANCES: UNLESS OTHERWISE SPECIFIED		TITLE YEL/RED BI-COLOR 0603 SM LED RoHS COMPLIANT			
FRACTIONS: ±1/64 DECIMALS (.XX): ±.01 DECIMALS (.XXX): ±.005 DECIMALS (.XXXX): ±.0005 ANGLES: ±1°					
FINISH: -		MATERIAL -			
FSCM 83330				1501 ROUTE 34 SOUTH FARMINGDALE, NJ 07727	
		SHEET 1 OF 1 FAMILY TABLE:			