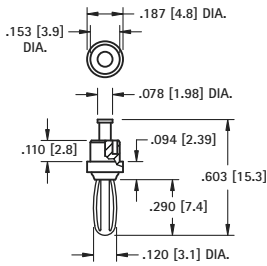


# MINI BANANA PLUGS - .120 (3.0)

Current Ratings: Miniature: (.120) 10 Amps



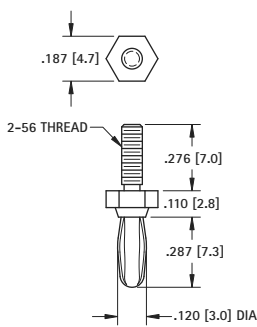
## SWAGE MOUNT



**MATERIAL:**  
**Spring:** Beryllium Copper  
**Body:** Brass, Silver Plate

**CAT. NO. 452**

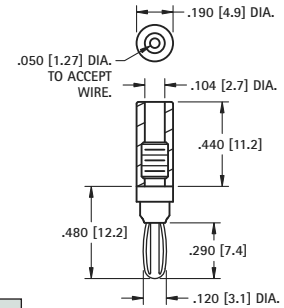
## THREADED



**MATERIAL:**  
**Spring:** Beryllium Copper, Nickel Plate  
**Body:** Brass, Silver Plate

**CAT. NO. 450**

## SOLDER CONNECTION

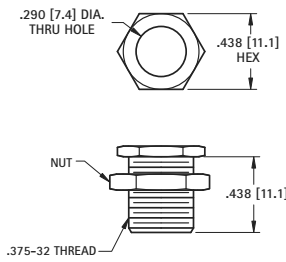


CAT. NO.	COLOR
6076	RED
6077	BLACK
451	NONE

**MATERIAL:**  
**Spring:** Beryllium Copper, Nickel Plate  
**Body:** Brass, Nickel Plate  
**Handle:** Nylon

# BANANA JACKS

## LARGE BANANA JACK



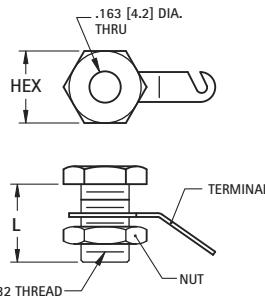
Accepts  
 .300 (7.6)  
 Plug

Supplied Unassembled

**CAT. NO. 6098**

**MATERIAL:**  
**Body:** Brass, Nickel Plate  
**Terminal:** Brass, Tin Plate

## NON-INSULATED STANDARD JACKS



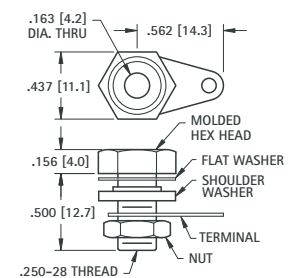
Accepts  
 .175 (4.5)  
 Plug

**MATERIAL:**  
**Body:** Brass, Nickel Plate  
**Terminal:** Brass, Tin Plate

Supplied with nut and lug. Unassembled

CAT. NO.	HEX	L	DESCRIPTION
6095	.375 (9.5)	.406 (10.3)	Resessed head
6096	.312 (7.9)	.500 (12.7)	Narrow Head

## INSULATED STANDARD JACKS



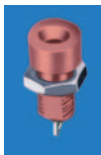
Accepts  
 .175 (4.5)  
 Plug

Supplied with hardware  
 Unassembled

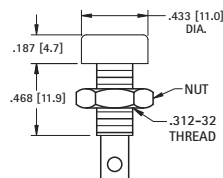
CAT. NO.	HEAD COLOR
6093	RED
6094	BLACK

**MATERIAL:**  
**Body:** Brass, Nickel Plate  
**Terminal:** Copper, Tinned  
**Hex Head:** Phenolic

## FULLY INSULATED STANDARD JACKS



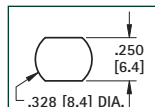
Accepts  
 .175 (4.5)  
 Plug



**MATERIAL:**  
**Body:** Nylon  
**Contact:** Brass, Tin Plate

CAT. NO.	COLOR
6091	RED
6092	BLACK

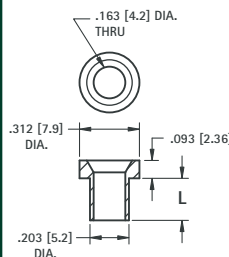
Mounting Detail



## SWAGE MOUNT

### STANDARD

Accepts  
 .175 (4.5)  
 Plug

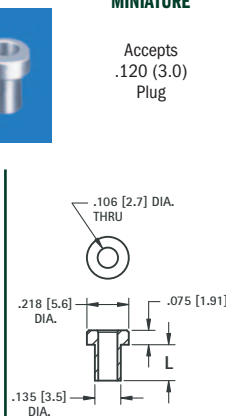


**MATERIAL:**  
 Brass, Nickel Plate

CAT. NO.	L
575-4	.218 (5.5)
575-6	.265 (6.7)
575-8	.350 (8.9)

### MINIATURE

Accepts  
 .120 (3.0)  
 Plug



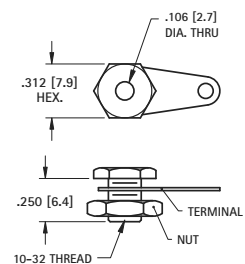
**MATERIAL:**  
 Brass, Tin Plate

CAT. NO.	L
476-2	.125 (3.2)
476-3	.165 (4.2)
476-4	.187 (4.7)

## MINIATURE BANANA JACK



Accepts  
 .120 (3.0)  
 Plug



Supplied with lug and nut.  
 Unassembled

**CAT. NO. 6090**

**MATERIAL:**  
**Body:** Brass, Nickel Plate  
**Terminal:** Copper, Tinned

BANANA PLUGS & JACKS