



SURFACE MOUNT (SMT) COIN CELL ENCLOSURE CONTACTS

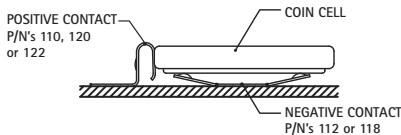
- Contacts for Enclosure cases with self contained battery compartments
- Design facilitates easy battery access, removal & installation

- Suitable for industrial and consumer product applications
- Spring contacts adjust to variations in battery diameter for a dependable connection

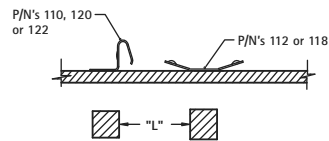
- Positive and Negative contacts can be used as a design pair or individually on a PCB
- Accommodates cell diameters from 12mm to 30mm

AVAILABLE ON TAPE AND REEL

MATERIAL: .006 (.15) Stainless Steel, Gold Plate (Flash)
Operating Temperature: -50°F to 185°F (-45°C to 85°C)



Refer to page 38 for Mounting Details

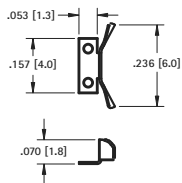


---CONTACT SELECTION GUIDE			
BATTERY DIAMETER	BATTERY REFERENCE	CAT. NO. REFERENCE	MOUNTING DETAIL
Accommodates 12mm to 16mm	CR1212, CR1216, CR1220, CR1612, CR1616, CR1620	120 (Pos) & 118 (Neg)	See page 38
	CR1225, CR1625, CR1632	110 (Pos) & 118 (Neg)	See page 38
Accommodates 20mm to 30mm	CR2012, CR2016, CR2020, CR2320, CR2412	120 (Pos) & 112 (Neg)	See page 38
	CR2025, CR2032, CR2325, CR2330, CR2430, CR3032	110 (Pos) & 112 (Neg)	See page 38
	CR2050, CR2335, CR2354, CR2440, CR2450, CR2477, CR3048	122 (Pos) & 112 (Neg)	See page 38

12mm to 30mm COIN CELL CONTACTS

POSITIVE

LOW BATTERY HEIGHT
1.2mm to 2.0mm

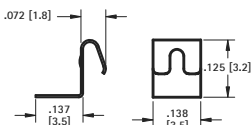


CAT. NO. 120 Bulk

CAT. NO. 120TR Tape & Reel

Tape & Reel Spec's: 16mm wide, 8mm pitch, 13 inch reel, 3000 pieces per reel

MEDIUM BATTERY HEIGHT
2.0mm to 3.2mm

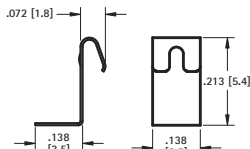


CAT. NO. 110 Bulk

CAT. NO. 110TR Tape & Reel

Tape & Reel Spec's: 16mm wide, 8mm pitch, 13 inch reel, 2000 pieces per reel

TALL BATTERY HEIGHT
3.5mm to 7.7mm



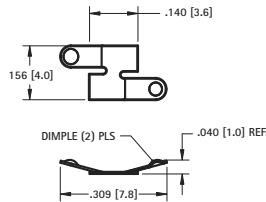
CAT. NO. 122 Bulk

CAT. NO. 122TR Tape & Reel

Tape & Reel Spec's: 16mm wide, 8mm pitch, 13 inch reel, 1000 pieces per reel

NEGATIVE

BATTERY DIAMETER
12mm to 16mm

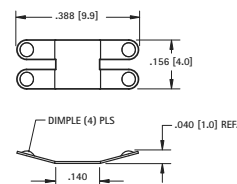


CAT. NO. 118 Bulk

CAT. NO. 118TR Tape & Reel

Tape & Reel Spec's: 24mm wide, 8mm pitch, 13 inch reel, 5000 pieces per reel

BATTERY DIAMETER
20mm to 30mm



CAT. NO. 112 Bulk

CAT. NO. 112TR Tape & Reel

Tape & Reel Spec's: 24mm wide, 8mm pitch, 13 inch reel, 5000 pieces per reel

SURFACE MOUNT (SMT) & THRU-HOLE (THM) NEGATIVE BATTERY CONTACTS

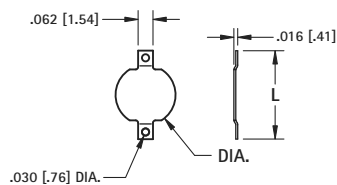
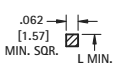
AVAILABLE ON TAPE AND REEL

SMT COMPACT*



- Assures proper contact

Pad Layout



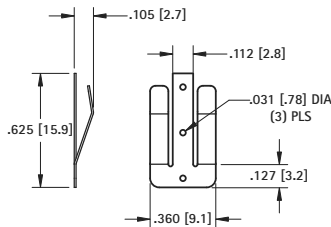
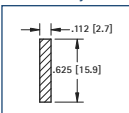
DWG. 1 MATERIAL: .008 (.20) Brass

SMT SPRING CONTACT*



- Assures proper contact

Pad Layout

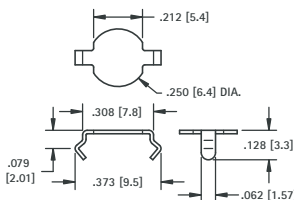


DWG. 2 MATERIAL: .010 (.25) Phosphor Bronze

THM SNAP IN*



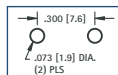
- Assures proper contact



MATERIAL:
.008 (.20) Phosphor Bronze, Tin-Nickel Plate

CAT. NO. 2990

Mounting Detail



TIN-NICKEL PLATE		MATTE TIN PLATE		DWG.	L	DIA.	TAPE & REEL SPECS
CAT. NO. BULK	ON TAPE & REEL	CAT. NO. BULK	ON TAPE & REEL				
2991	2991TR	2981	2981TR	1	.368 (9.4)	.250 (6.4)	16mm wide, 8mm pitch, 1500/7 reel
2992	2992TR	2982	2982TR	1	.289 (7.4)	.186 (4.7)	16mm wide, 12mm pitch, 1000/7 reel
2993	2993TR	2983	2983TR	2	.625 (15.9)	-	24mm wide, 16mm pitch, 1000/13 reel

*Note: Cannot be used with Cat. No. 3028, 3029, 3032, 3038, 3042, 3026, 3078.