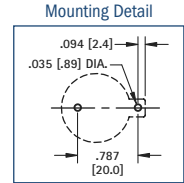
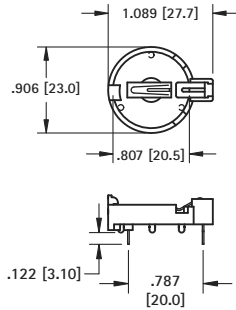




THRU HOLE (THM) & SURFACE MOUNT (SMT) 20mm EZ-OUT HOLDERS

- Top loading for compact applications
- Finger pressure against lever will release battery
- No tools required
- Holds battery securely under shock and vibration applications
- Nylon base material UL Rated 94V-0, impervious to most industrial solvents
- **Operating Temperature:** -60°F to 293°F (-50°C to 145°C)

THM EZ-OUT COIN CELL HOLDER



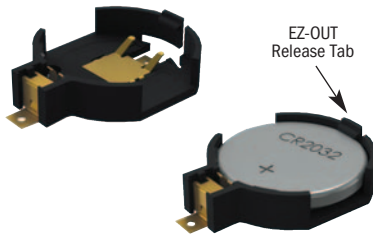
- Designed for manual insertion of battery.
- Mounts securely for wave soldering

MATERIAL:
Contacts: .016 (.41) Phosphor Bronze, Tin Plate
Base: Nylon UL Rated 94V-0

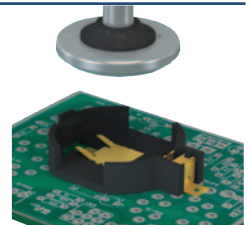
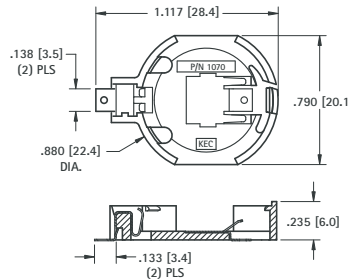
CAT. NO.	BATTERY REFERENCE
1066	BR2025, CR2032

SMT AUTO-IN/EZ-OUT COIN CELL HOLDER

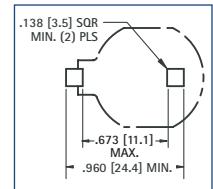
AVAILABLE ON TAPE AND REEL



- Designed for automatic vertical insertion of battery via a vacuum or mechanical pick-and-place device
- Compatible with vacuum and mechanical pick & place assembly systems
- All conductive polystyrene carrier tape meets ANSI/EIA-481 standards



Pad Layout

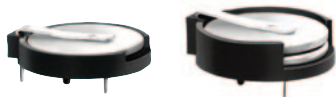


MATERIAL:
Contacts: .009 (.23) Phosphor Bronze, Gold Plate (Flash)
Base: High temperature PA9T, UL Rated 94V-0

CAT. NO.	ON TAPE & REEL	BATTERY REFERENCE
1070	1070TR	CR2032

Tape & Reel Spec's: 44mm Wide, 24mm Pitch, 13 inch reel (400 pieces per reel)

THRU HOLE (THM) & SURFACE MOUNT (SMT) 23mm COIN CELL HOLDERS

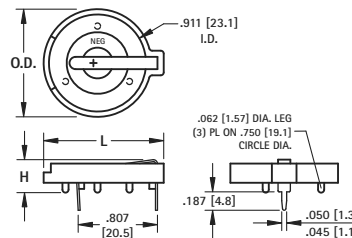


Thru Hole Mount

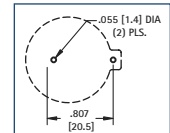
- Advanced air-flow design enhances air circulation around battery
- Unique notched slots assure quick and easy battery insertion and replacement

MATERIAL:
Contacts: .020 (.50) Spring Steel, Tin-Nickel Plate
Base: PBT, UL Rated 94V-0
Operating Temperature: -60°F to +293°F (-50°C to +145°C)

CAT. NO.	H	L	O.D.	NO. OF CELLS	BATTERY REFERENCE
104	.335 (8.5)	1.150 (29.2)	1.000 (25.4)	(1) Cell (Up to 2330)	BR2320, CR2320, CL2325, DL2330
107	.335 (8.5)	1.219 (31.0)	1.093 (27.8)	(1) Cell (Up to 2330)	
1027	.452 (11.5)	1.219 (31.0)	1.093 (27.8)	(1) 2354	CL2354, CR2335
				(2) 2320, (2) 2325, (2) 2330	

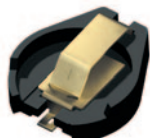


Mounting Detail



AVAILABLE ON TAPE AND REEL

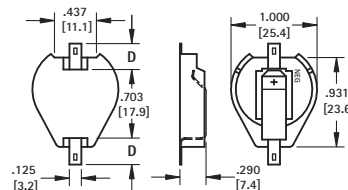
- SMT solder tail with "Flow-Hole" design for increased joint strength
- Viewable solder tails assures reliable joint inspection
- All conductive polystyrene carrier tape meets ANSI/EIA - 481 standard



Surface Mount

MATERIAL:
Contacts: .015 (.38) Steel
Base: High Temp Nylon 46, UL Rated 94V-0
Operating Temperature: -60°F to +293°F (-50°C to +145°C)

Tin-Nickel Plate		Gold Plate (Flash)		D PAD SIZE	BATTERY REFERENCE
CAT. NO. BULK & REEL	ON TAPE & REEL	CAT. NO. BULK & REEL	ON TAPE & REEL		
1071	1071TR	1091	1091TR	.156 (4.0)	CR2320, CL2325, DL2330, CR2335
1073	1073TR	1083	1083TR	.278 (7.1)	DL2330, CR2335



Pad Layout

